

General Notes

- General Arrangement (GA) Drawings (plans, sections, elevations):
  - For Site Plan drawings refer to 423\_00\_100
  - For GA Floor Plans Ground to Sixth Floor refer to 423\_00\_205 to 423\_00\_216
  - For GA Roof Plan refer to 423\_00\_217
  - For GA Section drawings refer to 423\_00\_300
  - For GA Elevation drawings refer to 423\_00\_330 to 423\_00\_337
  - For Key Plan (Partition Type) drawings refer to 423\_00\_310 to 423\_00\_316
- Detailed Layout Drawings (interior):
  - For Typical Bedroom Layouts refer to 423\_00\_400 / 423\_00\_401 / 423\_00\_415 / 423\_00\_450 / 423\_00\_460 to 423\_00\_464
  - For Typical Bedroom RCP / Electrical Layouts refer to 423\_35\_401 / 423\_35\_415
  - For Typical Cluster Flat Kitchen Layouts refer to 423\_00\_420
  - For Typical Cluster Flat Kitchen RCP / Electrical Layouts refer to 423\_35\_420
  - For Typical Bedroom Types refer to 423\_00\_460 to 423\_00\_464
  - For Student Amenity Space Layouts refer to 423\_00\_430 and 423\_00\_431
  - For Typical Common Corridor Layouts refer to 423\_00\_440
- Joinery Details:
  - For Joinery Details (Typical Bedroom Joinery) refer to 423\_72\_500 / 423\_72\_504 to 423\_72\_506
- Stair & Lift Core Drawings (setting out / risers/goings / clearances):
  - For Stair & Lift Core Plans and Sections refer to 423\_24\_400 to 423\_24\_407 and 423\_00\_411

- Fire Strategy drawings / MOE, compartments, AOV points, dash distances:
  - For Fire Strategy Drawings refer to 423\_FR\_210 to 423\_FR\_216
- Reflected Ceiling Plans:
  - For GA RCPs refer to 423\_35\_210 to 423\_35\_216
  - For Detailed Layout RCPs refer to 423\_35\_400 / 423\_35\_401 / 423\_35\_415 / 423\_35\_420 / 423\_35\_430 / 423\_35\_431 / 423\_35\_440
- Construction Intent Details:
  - For Typical External Wall Build-up Details refer to 423\_21\_600 to 423\_21\_603 / 423\_21\_607 423\_00\_610
  - For Typical Internal Wall / Partition Build-up Details refer to 423\_22\_600 and 423\_22\_601
  - For Floor / Roof / Podium Build-up Details refer to 423\_23\_600 to 423\_23\_602
  - For Typical Stair Details refer to 423\_24\_600
  - For Typical Roof Upstand Details refer to 423\_27\_600 and 423\_27\_601
  - For Typical Door Details refer to 423\_31\_600 to 423\_27\_617
- Specifications / Schedules:
  - For NBS specification refer to 423\_00\_901
  - For Door Schedule refer to 423\_00\_903
  - For Window schedule refer to 423\_00\_904
  - For Room Area Schedule refer to 423\_00\_905
  - For Lifts Options Schedule / Summary Sheet refer to 423\_00\_906

This drawing is to be read in conjunction with all WGP GAs, detailed layouts, joinery details, fire strategy drawings, RCPs, construction intent details, specification and Schedule of Works references and room areas schedule. Refer to room type schedule for Gold / Silver / Bronze classification of each room.

Drawings to be read in conjunction with the following consultants' information: Vector Design for MEP engineering details, schedules and schematics for all mechanical, electrical and public health (above ground) design information; HWA Ltd for Structural Engineering designs and below ground drainage; and Turkington Martin for Landscape Design Information.

Drawings to be read in conjunction with the following consultants' reports: KP Acoustics for acoustic report, requirements and specification; and JGA for fire strategy report.

Acoustic build-ups are indicated on WGP Architects' wall and floor-build-up details. For a full acoustic information refer to the compliance report by KP Acoustics.

Typical fire compartment lines are shown on fire strategy plans and detailed room layouts. For full compartmentation and strategy information refer to WGP Architects' fire strategy drawings and accompanying fire strategy report by JGA. Ensure adequate fire stopping to services where compartment lines are crossed.

For BREEM requirements refer to tracker by SRE. It is the main contractor's responsibility to comply with all necessary specifications, schedules and relevant standards in order to achieve minimum BREEM 'Excellent' rating for the works.

Visible second fix services (electrical face plates, lights and radiators) are indicated and set-out in plan and elevation. Concealed pipework is shown in section only. Pipework supplied by the pod manufacturer is highlighted grey.

Fabrication drawings of all joinery are required for review prior to manufacture.

Loose FF&E is indicated dashed. Alternative / equivalent specifications for FF&E and finishes submitted by the main contractor may be acceptable, subject to approval by the Employer's Agent.

Any discrepancies in the drawings or written information should be reported to WGP Architects immediately. Use figured dimensions only and report any discrepancies to WGP Architects or Stace immediately.

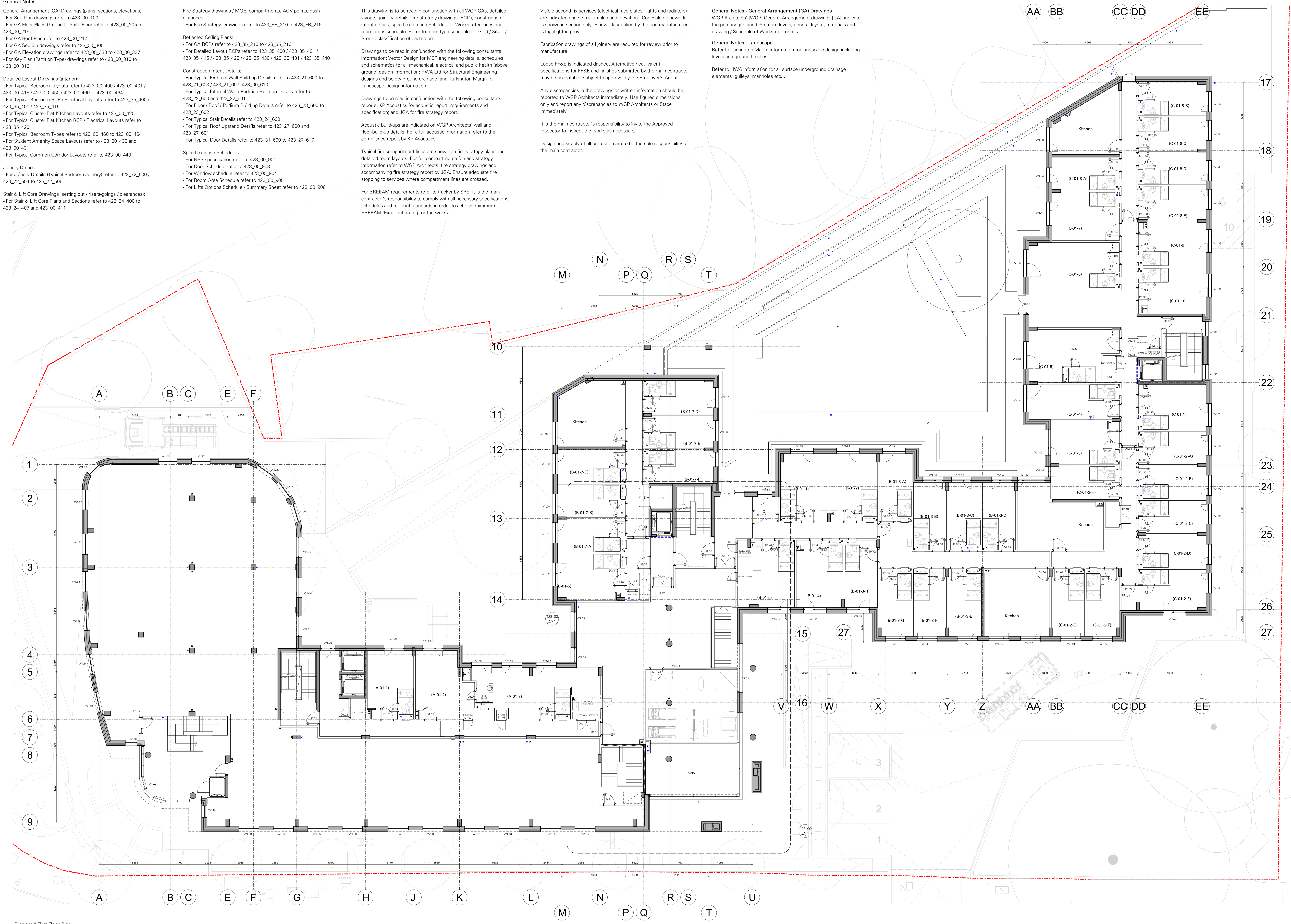
It is the main contractor's responsibility to invite the Approved Inspector to inspect the works as necessary.

Design and supply of all protection are to be the sole responsibility of the main contractor.

**General Notes - General Arrangement (GA) Drawings**  
WGP Architects' (WGP) General Arrangement drawings (GA) indicate the primary grid and OS datum levels, general layout, materials and drawing / Schedule of Works references.

**General Notes - Landscape**  
Refer to Turkington Martin information for landscape design including levels and ground finishes.

Refer to HWA information for all surface underground drainage elements (gulleys, manholes etc.).



Proposed First Floor Plan



For Construction

General arrangement drawing

Project  
Moulsecoomb Way, Brighton, BN2 4PB

Client  
**McLAREN**

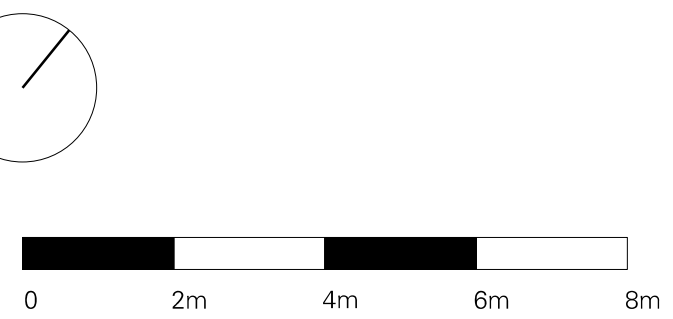
Drawing  
Proposed Floor Plan  
General Arrangement  
First Floor

Scale  
1:100 @ A0, 1:200 @ A2

Drawing no. / Revision  
423\_00\_211 / T

Revision	Date	Drawn	Approved	Notes
P	28.10.2020	TY	NG	SEE CLOUDS
Q	28.10.2020	TY	NG	SEE CLOUDS
R	14.12.2020	TY	DL	SEE CLOUDS
S	12.04.2021	JAS	JAS	SEE CLOUDS
T	05.08.2021	JAS	PW	ROOM NUMBERS

Drawing Key  
--- Site Boundary



Do not scale. Use figured dimensions only.  
Confirm all dimensions on site.  
Do not scale. Use figured dimensions only.  
Confirm all dimensions on site.  
© Waind Gohil + Potter Architects 2016